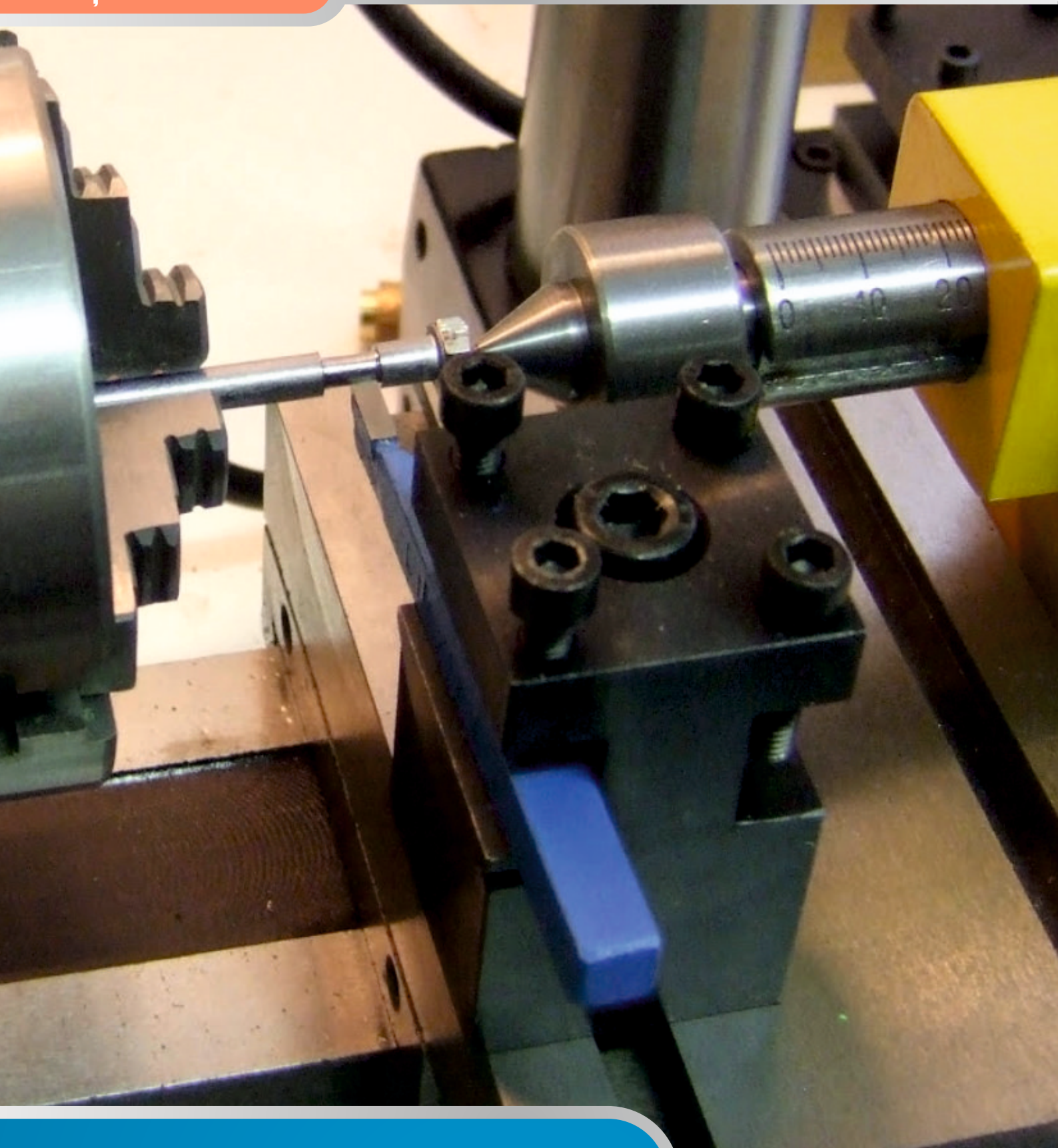


CUȚITE DE STRUNG



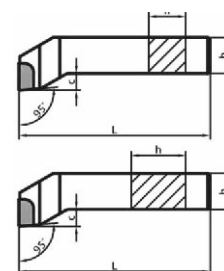
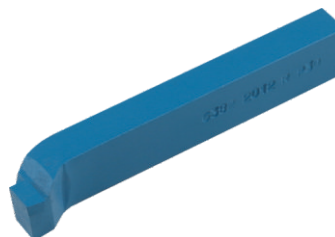
since 1991

PENTAGON

Întotdeauna Soluția Potrivită

SA6382

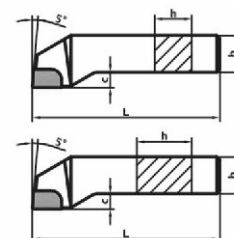
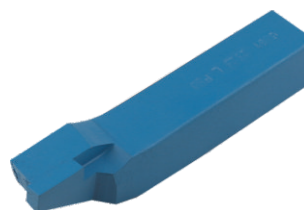
Cuțit frontal DIN 4977 R/L - STAS 6382



Cod	h	b	L	c	Cod	h	b	L	c
SA63820808080	8	8	80	4	SA63824040200	40	40	200	20
SA63821010090	10	10	90	5	SA63825050240	50	50	240	25
SA63821212100	12	12	100	6	SA63822012125	20	12	125	8
SA63821616110	16	16	110	8	SA63822416140	24	16	140	10
SA63822020125	20	20	125	10	SA63823220170	32	20	170	12
SA63822525140	25	25	140	12	SA63824025200	40	25	200	16
SA63823232170	32	32	170	16	SA63825032240	50	32	240	20

SA6381

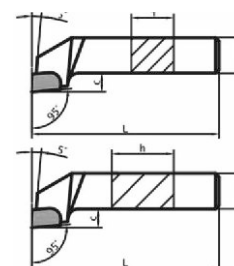
Cuțit lateral DIN 4980 R/L - STAS 6381



Cod	h	b	L	c	Cod	h	b	L	c
SA63810808080	8	8	80	3	SA63815050240	50	50	240	18
SA63811010090	10	10	90	4	SA63811208100	12	8	100	4
SA63811212100	12	12	100	5	SA63812012125	20	12	125	6
SA63811616110	16	16	110	6	SA63812516140	25	16	140	8
SA63812020125	20	20	125	8	SA63813220170	32	20	170	10
SA63812525140	25	25	140	10	SA63814025200	40	25	200	12
SA63813232170	32	32	170	12	SA63815032240	50	32	240	14
SA63814040200	40	40	200	14					

SA6379

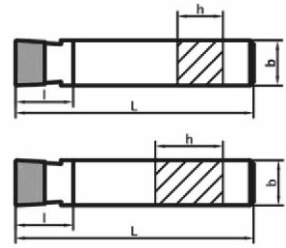
Cuțit pentru colț DIN 4978 R/L - STAS 6379



Cod	h	b	L	c	Cod	h	b	L	c
SA63790808080	8	8	80	4	SA63791610110	16	10	110	5
SA63791010090	10	10	90	5	SA63792012125	20	12	125	6
SA63791212100	12	12	100	6	SA63792516140	25	16	140	8
SA63791616110	16	16	110	6	SA63793220170	32	20	170	10
SA63792020125	20	20	125	8	SA63794025200	40	25	200	12
SA63792525140	25	25	140	10	SA63795032240	50	32	240	14
SA63793232170	32	32	170	12					

SA6380

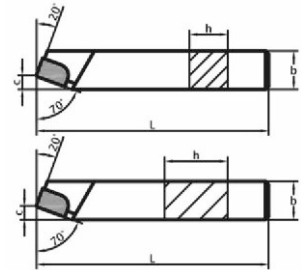
Cuțit lat DIN 4976 - STAS 6380



Cod	h	b	L	c	Cod	h	b	L	c
SA63800808080	8	8	80	8	SA63804040200	40	40	200	40
SA63801010090	10	10	90	10	SA63801610110	16	10	110	16
SA63801212100	12	12	100	12	SA63802012125	20	12	125	20
SA63801616110	16	16	110	16	SA63802516140	25	16	140	25
SA63802020125	20	20	125	20	SA63803220170	32	20	170	32
SA63802525140	25	25	140	25	SA63804025200	40	25	200	40
SA63803232170	32	32	170	32	SA63805032240	50	32	240	50

SA6376

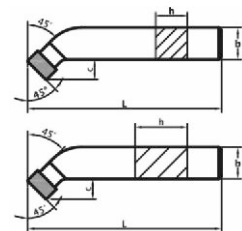
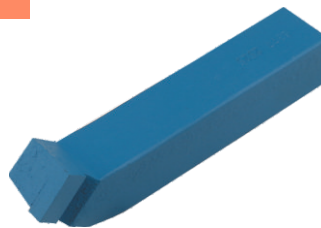
**Cuțit drept pentru degroșat
DIN 4971 R/L - STAS 6376**



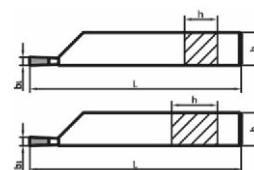
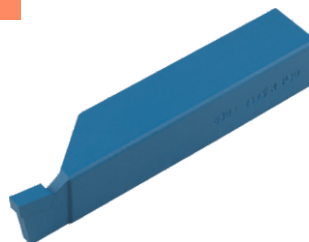
Cod	h	b	L	c	Cod	h	b	L	c
SA63760808080	8	8	80	3	SA63764040200	40	40	200	16
SA63761010090	10	10	90	4	SA63765050240	50	50	240	20
SA63761212100	12	12	100	5	SA63761208100	12	8	100	3
SA63761616110	16	16	110	6	SA63762012125	20	12	125	5
SA63762020125	20	20	125	8	SA63762516140	25	16	140	6
SA63762525140	25	25	140	10	SA63763220170	32	20	170	8
SA63763232170	32	32	170	12	SA63764025200	40	25	200	10

SA6377

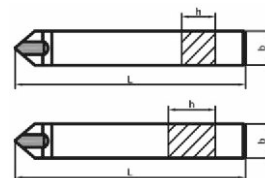
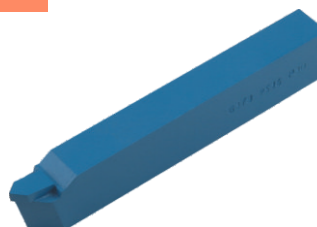
**Cuțit încovoiat pentru degroșat
DIN 4972 - STAS 6377**



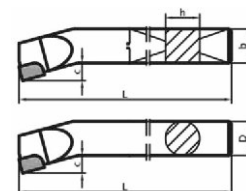
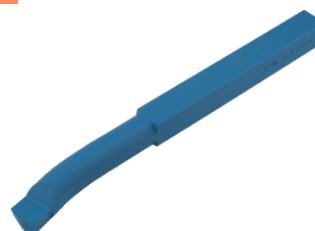
Cod	h	b	L	c	Cod	h	b	L	c
SA63770808080	8	8	80	5	SA63774040200	40	40	200	16
SA63771010090	10	10	90	6	SA63775050240	50	50	240	22
SA63771212100	12	12	100	7	SA63772012125	20	12	125	8
SA63771616110	16	16	110	8	SA63772516140	25	16	140	10
SA63772020125	20	20	125	10	SA63773220170	32	20	170	12
SA63772525140	25	25	140	12	SA63774025200	40	25	200	14
SA63773232170	32	32	170	14					

SA6383
Cuțit pentru canelat
DIN 4981 R/L - STAS 6383


Cod	h	b	L	c	Cod	h	b	L	c
SA63830808080	8	8	80	3	SA63835050240	50	50	240	12
SA63831010090	10	10	90	3	SA63831208100	12	8	100	3
SA63831212100	12	12	100	3	SA63831610110	16	10	110	4
SA63831616110	16	16	110	4	SA63832012125	20	12	125	5
SA63832020125	20	20	125	5	SA63832516140	25	16	140	6
SA63832525140	25	25	140	6	SA63833220170	32	20	170	8
SA63833232170	32	32	170	8	SA63834025200	40	25	200	10
SA63834040200	40	40	200	10	SA63835032240	50	32	240	12

SA6378
Cuțit drept pentru finisat
DIN 4975 - STAS 6378


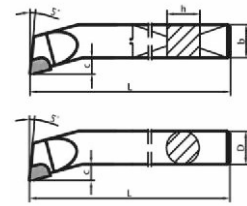
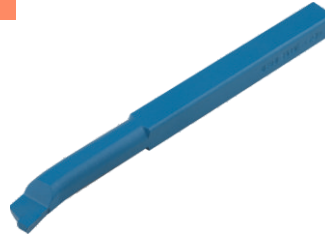
Cod	h	b	L	Cod	h	b	L
SA63780808080	8	8	80	SA63783232170	32	32	170
SA63781010090	10	10	90	SA63781610110	16	10	110
SA63781212100	12	12	100	SA63782012125	20	12	125
SA63781616110	16	16	110	SA63782516140	25	16	140
SA63782020125	20	20	125	SA63783220170	32	20	170
SA63782525140	25	25	140	SA63784025200	40	25	200

SA6384
Cuțit pentru interior
DIN 4973 R/L - STAS 6384


Cod	h	b	L	c	Cod	h	b	L	c
SA63840808125	8	8	125	3	SA63842020250	20	20	250	8
SA63841010150	10	10	150	4	SA63842525300	25	25	300	10
SA63841212180	12	12	180	5	SA63843232355	32	32	355	12
SA63841616210	16	16	210	6	SA63844040420	40	40	420	16

SA6385

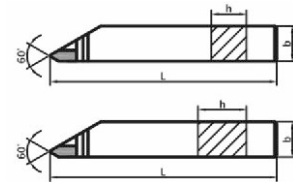
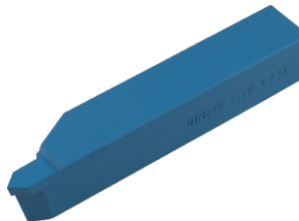
**Cuțit pentru colț interior
DIN 4974 R/L - STAS 6385**



Cod	h	b	L	c	Cod	h	b	L	c
SA63850808125	8	8	125	3	SA63852020250	20	20	250	8
SA63851010150	10	10	150	4	SA63852525300	25	25	300	10
SA63851212180	12	12	180	5	SA63853232355	32	32	355	12
SA63851616210	16	16	210	6	SA63854040420	40	40	420	16

SA282M

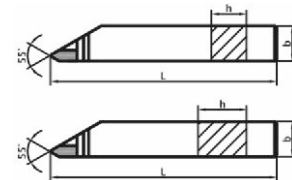
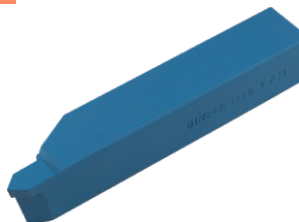
**Cuțit pentru filet metric exterior
DIN 282 R/L**



Cod	h	b	L	Cod	h	b	L
SA282M0808090	8	8	90	SA282M3232180	32	32	180
SA282M1010100	10	10	100	SA282M1208110	12	8	110
SA282M1212110	12	12	110	SA282M1610120	16	10	120
SA282M1616125	16	16	125	SA282M2012140	20	12	140
SA282M2020140	20	20	140	SA282M2516160	25	16	160
SA282M2525160	25	25	160	SA282M3220180	32	20	180

SA282W

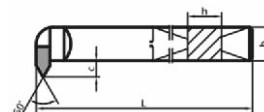
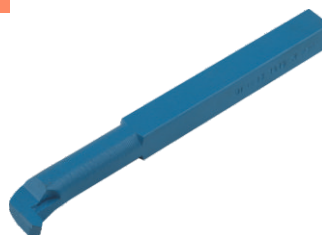
**Cuțit pentru filet withworth exterior
DIN 282 R/L**



Cod	h	b	L	Cod	h	b	L
SA282W0808090	8	8	90	SA282W3232180	32	32	180
SA282W1010100	10	10	100	SA282W1208110	12	8	110
SA282W1212110	12	12	110	SA282W1610120	16	10	120
SA282W1616125	16	16	125	SA282W2012140	20	12	140
SA282W2020140	20	20	140	SA282W2516160	25	16	160
SA282W2525160	25	25	160	SA282W3220180	32	20	180

SA283M

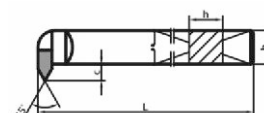
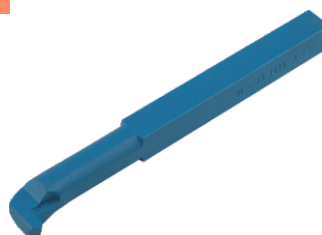
**Cuțit pentru filet metric interior
DIN 283 R/L**



Cod	h	b	L	c	Cod	h	b	L	c
SA283M0808125	8	8	125	4	SA283M2020250	20	20	250	10
SA283M1010150	10	10	150	5	SA283M2525300	25	25	300	12
SA283M1212180	12	12	180	6	SA283M3232355	32	32	355	14
SA283M1616210	16	16	210	8					

SA283W

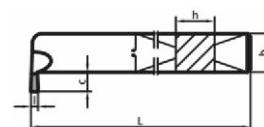
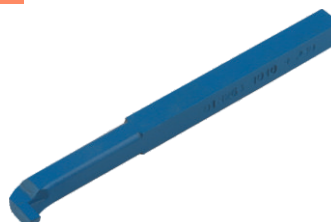
**Cuțit pentru filet withworth interior
DIN 283 R/L**



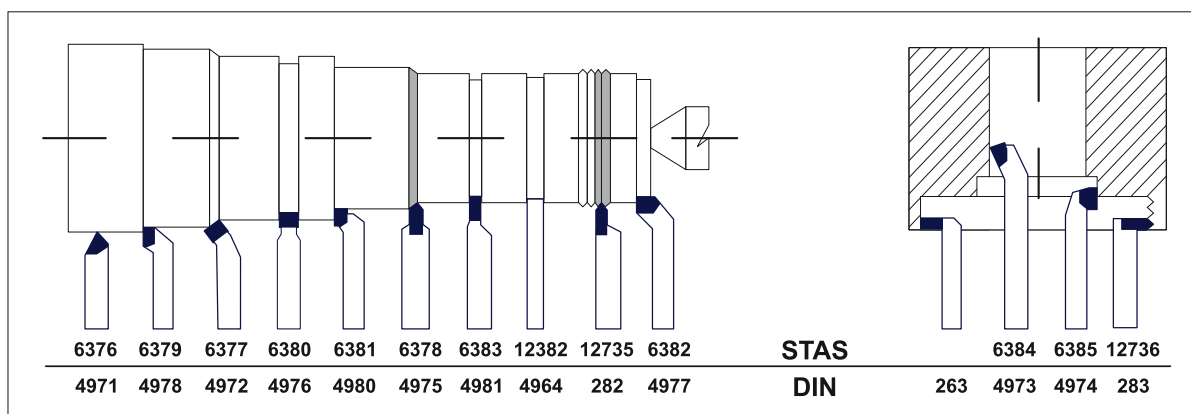
Cod	h	b	L	c	Cod	h	b	L	c
SA283W0808125	8	8	125	4	SA283W2020250	20	20	250	10
SA283W1010150	10	10	150	5	SA283W2525300	25	25	300	12
SA283W1212180	12	12	180	6	SA283W3232355	32	32	355	14
SA283W1616210	16	16	210	8					

SA263

**Cuțit pentru canelat interior
DIN 263 R/L**

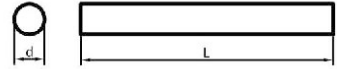


Cod	h	b	L	l	c	Cod	h	b	L	l	c
SA2630808125	8	8	125	3	6	SA2632020250	20	20	250	6	16
SA2631010150	10	10	150	3	8	SA2632525300	25	25	300	8	20
SA2631212180	12	12	180	4	10	SA2633232355	32	32	355	10	25
SA2631616210	16	16	210	5	12						



SA4964A

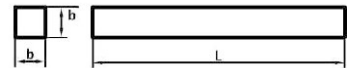
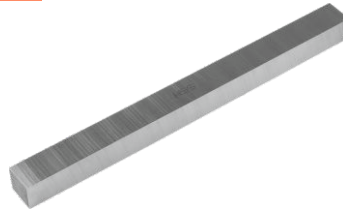
**Bară rectificată din oțel rapid
HSS DIN 4964 - Formă A**



Cod	d (h9)	L ±2	Cod	d (h9)	L ±2
SA4964A04063	4	63	SA4964A08200	8	200
SA4964A04080	4	80	SA4964A10080	10	80
SA4964A04100	4	100	SA4964A10100	10	100
SA4964A05063	5	63	SA4964A10160	10	160
SA4964A05080	5	80	SA4964A10200	10	200
SA4964A05100	5	100	SA4964A12100	12	100
SA4964A06063	6	63	SA4964A12160	12	160
SA4964A06080	6	80	SA4964A12200	12	200
SA4964A06100	6	100	SA4964A16100	16	100
SA4964A06160	6	160	SA4964A16160	16	160
SA4964A08080	8	80	SA4964A16200	16	200
SA4964A08100	8	100	SA4964A20200	20	200
SA4964A08160	8	160			

SA4964B

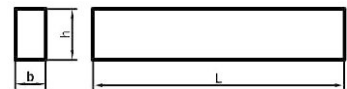
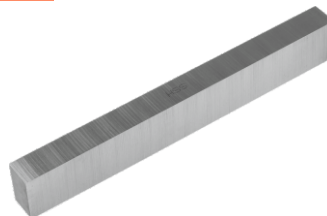
**Bară rectificată din oțel rapid
HSS DIN 4964 - Formă B**



Cod	d (h13)	L ±2	Cod	d (h9)	L ±2
SA4964B04063	4	63	SA4964B10160	10	160
SA4964B05063	5	63	SA4964B10200	10	200
SA4964B06063	6	63	SA4964B12063	12	63
SA4964B06080	6	80	SA4964B12080	12	80
SA4964B06100	6	100	SA4964B12100	12	100
SA4964B06160	6	160	SA4964B12160	12	160
SA4964B06200	6	200	SA4964B12200	12	200
SA4964B08063	8	63	SA4964B16100	16	100
SA4964B08080	8	80	SA4964B16160	16	160
SA4964B08100	8	100	SA4964B16200	16	200
SA4964B08160	8	160	SA4964B20160	20	160
SA4964B08200	8	200	SA4964B20200	20	200
SA4964B10063	10	63	SA4964B25200	25	200
SA4964B10080	10	80	SA4964B32200	32	200
SA4964B10100	10	100			

SA4964D

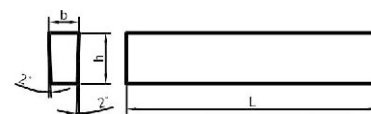
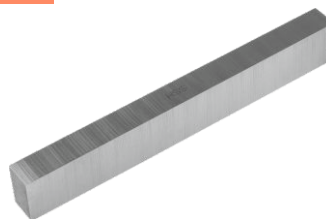
**Bară rectificată din oțel rapid
HSS DIN 4964 - Formă D**



Cod	h (h13)	b (h13)	L ±2	Cod	h (h13)	b (h13)	L ±2
SA4964D0604100	6	4	100	SA4964D1608160	16	8	160
SA4964D0804100	8	4	100	SA4964D1608200	16	8	200
SA4964D0805100	8	5	100	SA4964D1610160	16	10	160
SA4964D1005100	10	5	100	SA4964D1610200	16	10	200
SA4964D1006160	10	6	160	SA4964D2010160	20	10	160
SA4964D1006200	10	6	200	SA4964D2010200	20	10	200
SA4964D1206160	12	6	160	SA4964D2012160	20	12	160
SA4964D1206200	12	6	200	SA4964D2012200	20	12	200
SA4964D1208160	12	8	160	SA4964D2512200	25	12	200
SA4964D1208200	12	8	200	SA4964D2516200	25	16	200

SA4964E

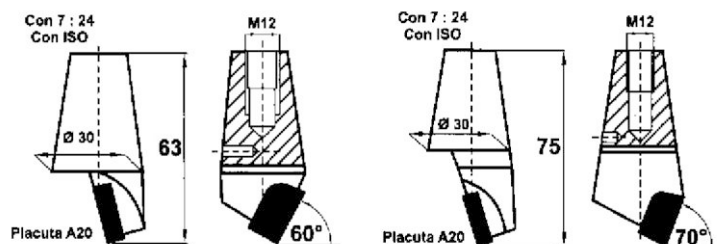
**Bară rectificată din oțel rapid
HSS DIN 4964 - Formă E1**



Cod	h (h13)	b (h13)	L ±2	Cod	h (h13)	b (h13)	L ±2
SA4964E06016080	6	1,6	80	SA4964E16040160	16	4	160
SA4964E06016100	6	1,6	100	SA4964E20050100	20	5	100
SA4964E08020080	8	2	80	SA4964E20050160	20	5	160
SA4964E08020100	8	2	100	SA4964E20050200	20	5	200
SA4964E10025080	10	2,5	80	SA4964E25060160	25	6	160
SA4964E10025100	10	2,5	100	SA4964E25060200	25	6	200
SA4964E12030080	12	3	80	SA4964E32080160	32	8	160
SA4964E12040100	12	4	100	SA4964E32080200	32	8	200
SA4964E16040100	16	4	100	SA4964E40100200	40	10	200

SAR30

Cuțit Romascon



Cod	Tip	Plăcuță
SAR28P30	Romascon R 28	P30
SAR32P30	Romascon R 32	P30